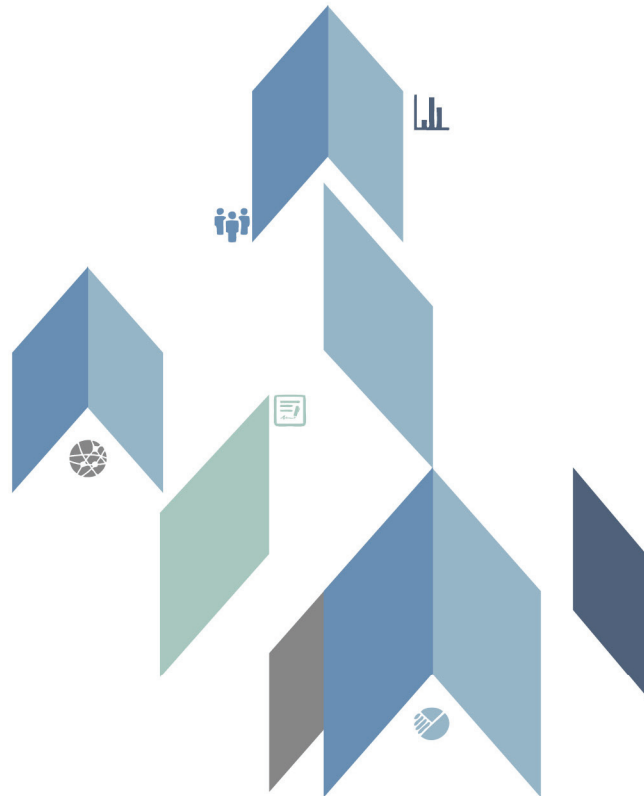


NATIONAL RESEARCH COUNCIL FOR ECONOMICS,
HUMANITIES AND SOCIAL SCIENCES

지역인구 감소시대, 지역과 대학의 결합 모델에 관한 연구

A Study on Coupling the Region
and Universities Amid the Regional
Population Decline

국토연구원 서연미 외



Abstract

South Korea's rapid regional population decline has been perceived as a national crisis. To deal with this challenge, this research aims to unpack what has served as a risk to both regions and universities and explores the policy tasks to couple them for cooperative development.

Firstly, within the context of low-fertility rates and rapid aging, we investigate why the regions and universities are facing challenges. It is revealed that the current regional imbalance is caused by the outflow of the youth generation, which shows the importance of strengthening regional competitiveness by improving the competitiveness of universities.

Secondly, we examine why coupling the regions and universities has become more important, instead of merely linking and collaborating with them. Along with the new paradigm of the universities, which emphasizes the value of contributing to the local community through active participation in solving local and regional problems, we demonstrate how universities and local governments could commit to local development by expanding their roles and functions.

Thirdly, we investigate the possible new roles and functions of universities and local governments through both domestic and international cases. One of the models to couple the region and universities are by expanding the existing function by implementing job opportunities and education. Another model is to introduce a new role by applying a dwelling function.

Fourthly, we explore how the coupling of the region and universities operate in the real world through the case study area, Daegu, Gyeongsan, and Andong. We analyze the strategies that region and universities utilize to deal with the challenges of depopulation and the outflow of the youth population.

Finally, compiling the findings, we deduce policy tasks to activate the ways to couple the region and universities amid the era that regional population decline has become a national crisis.

Keyword : regional population decline, civic university, entrepreneurial ecosystem, lifelong learning, university-based retirement community(UBRC), coupling the region and universities